



## Replacement Bridge Alignment Selected

**New bridge to be built on site of current bridge;  
Highway 224 intersection improvements on hold**

**OPEN HOUSE UPDATE**  
**WHEN:** Wednesday, May 21st  
**TIME:** 6:00-8:00 pm  
Presentation at 6 p.m.  
Open House to follow  
**PLACE:** Carver School  
16077 SE Highway 224  
Clackamas, OR 97015

**MORE INFORMATION**  
**WEB:** [www.carverbridge.com](http://www.carverbridge.com)  
**PHONE:** (503) 736-4800

Clackamas County will build the replacement bridge for the Carver Bridge at its current location. This decision, made primarily because the County has been unable to obtain the additional funds needed to build at an alternative location, eliminates the upstream alignment alternative and related improvements to the Highway 224 intersection.

The County will hold a public open house from 6:00 to 8:00 p.m., Wednesday, May 21, at Carver School to discuss the project time line and other details, and gather input on design options for the replacement bridge.

### Background

Clackamas County has been working on a project to replace the existing Carver Bridge, which crosses the Clackamas River on Springwater Road in Carver. Any new river crossing in the area must be designed to accommodate future traffic volumes and to minimize impacts on existing homes and businesses. These factors have been key points in evaluating alternative locations for the replacement bridge.

The County refined and evaluated three possible locations:

- Upstream from the current bridge;
- Downstream from the current bridge; or
- At the current bridge site.

*Continued on page 2*

  
CLACKAMAS COUNTY  
Clackamas County  
9101 SE Sunnybrook Blvd  
Clackamas, OR 97015

  
OREGON TRANSPORTATION INVESTMENT ACT

**JOIN US**  
Carver Bridge  
Public Open House, May 21<sup>ST</sup>

January 2007

Location Alternatives Analysis

May 2008

Preliminary Bridge and Roadway Design

November 2008

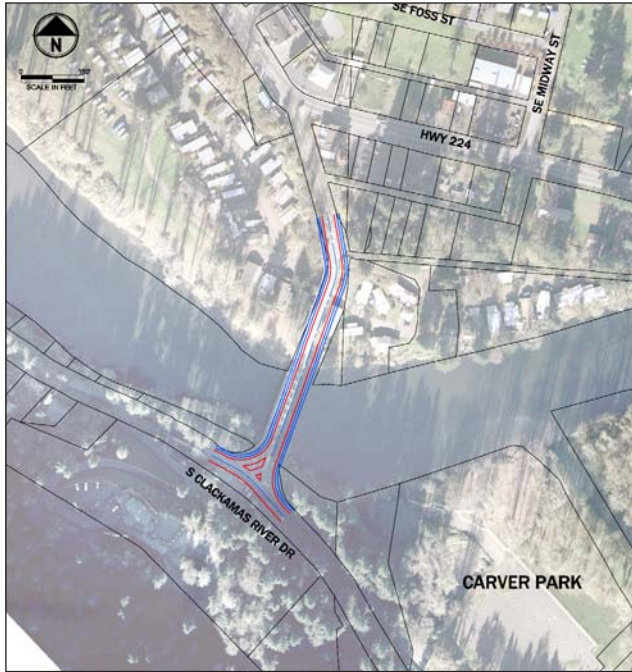
Final Design and Bid Document

April 2010

Construction

December 2011

New Bridge Opens



Map shows the alignment for the replacement bridge at the existing Carver Bridge site.

### Background, continued from cover

In 2007, the County eliminated the downstream option, partly in response to public input. Now, the County has eliminated the upstream location and plans for the Highway 224 intersection improvements, due to lack of necessary additional funding.

### Benefits to building at the existing site

Building the new bridge at the site of the current bridge will:

- Provide the funds to include sidewalks and bike lanes on both sides of the bridge.
- Give the County and its partners (the City of Damascus and the Oregon Department of Transportation) more time to plan, coordinate and fund future transportation improvements in the area, such as the Highway 224 intersection.

### Next Steps

The County will now complete engineering and design for the new bridge. Construction will be carefully staged in order to maintain a two-way flow of traffic during the majority of the project while keeping closures to a minimum. The total bridge replacement



construction process is expected to take two years and could begin as soon as spring 2010.

Surveyors will be on-site, and geotechnical work will begin within the next two months.



Geotechnical workers drill to collect soil samples for a previous bridge project.

The data gathered from their work will be used to help us design the road and bridge support structures.

### Project Updates

For more information and project updates, please attend the open house on May 21 or visit the project website at: [www.carverbridge.com](http://www.carverbridge.com). If you have questions or comments, call the project information line at (503) 736-4800.

### CONTACT

For more information or questions, please contact:

**Derek Chisholm** — 503-230-8169

Public Involvement Specialist

**Carver Bridge Hotline** — 503-736-4800

Leave comments and questions

Visit the project website at [www.carverbridge.com](http://www.carverbridge.com)