

Project History

2006

2007

January 2007

A public open house generated feedback on the three alignments.

2008

May 2008

The selection of the Current Bridge Location Alternative was discussed at a public open house and feedback was requested on:

- What type of bridge structure (concrete or steel) should be built?
- How should traffic be managed during construction?
- What should the bridge look like?

2009

2010

2011

2012

Today

A public open house to discuss:

- Construction schedule
- Efforts made to reduce noise and disruptions
- Project history

2006–2007

A field survey, traffic study, and meetings with stakeholders resulted in the development of three potential alignments for the replacement bridge:

1. Downstream Alternative
2. Upstream Alternative
3. Current Bridge Location Alternative

2007–2008

Further analysis resulted in the elimination of the Downstream Alternative and Upstream Alternative. By selecting the Current Bridge Location Alternative, the project will:

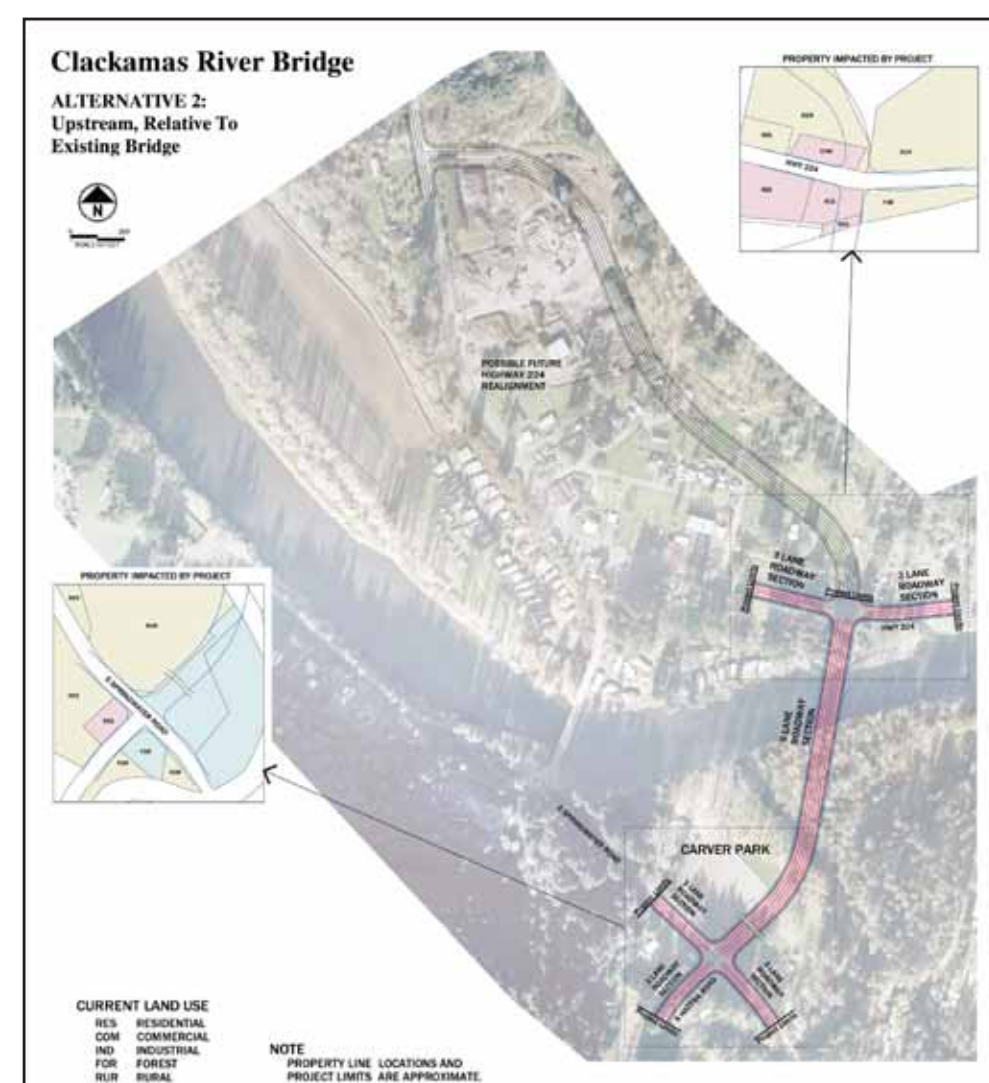
- Increase traffic safety on the bridge
- Be constructed within the project budget
- Provide sidewalks and bike lanes
- Provide more time to coordinate, design, and obtain funding for Highway 224 intersection improvements

2008–2011

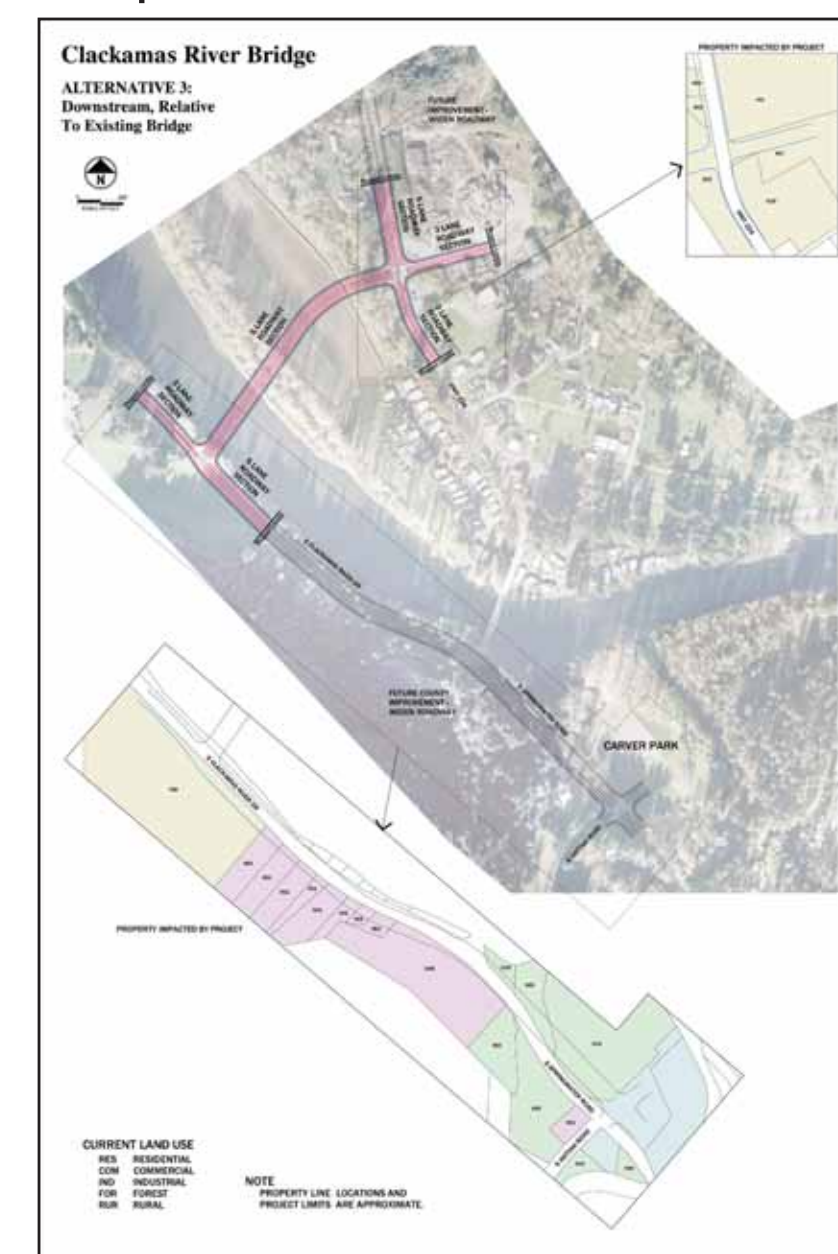
Final engineering resulted in the selection of a concrete bridge with a single pier in the river as the replacement bridge type, with a detour to be used during construction.

Construction contractor was selected in the 2nd quarter of 2011.

1. Downstream Alternative



2. Upstream Alternative



3. Current Bridge Location Alternative

